

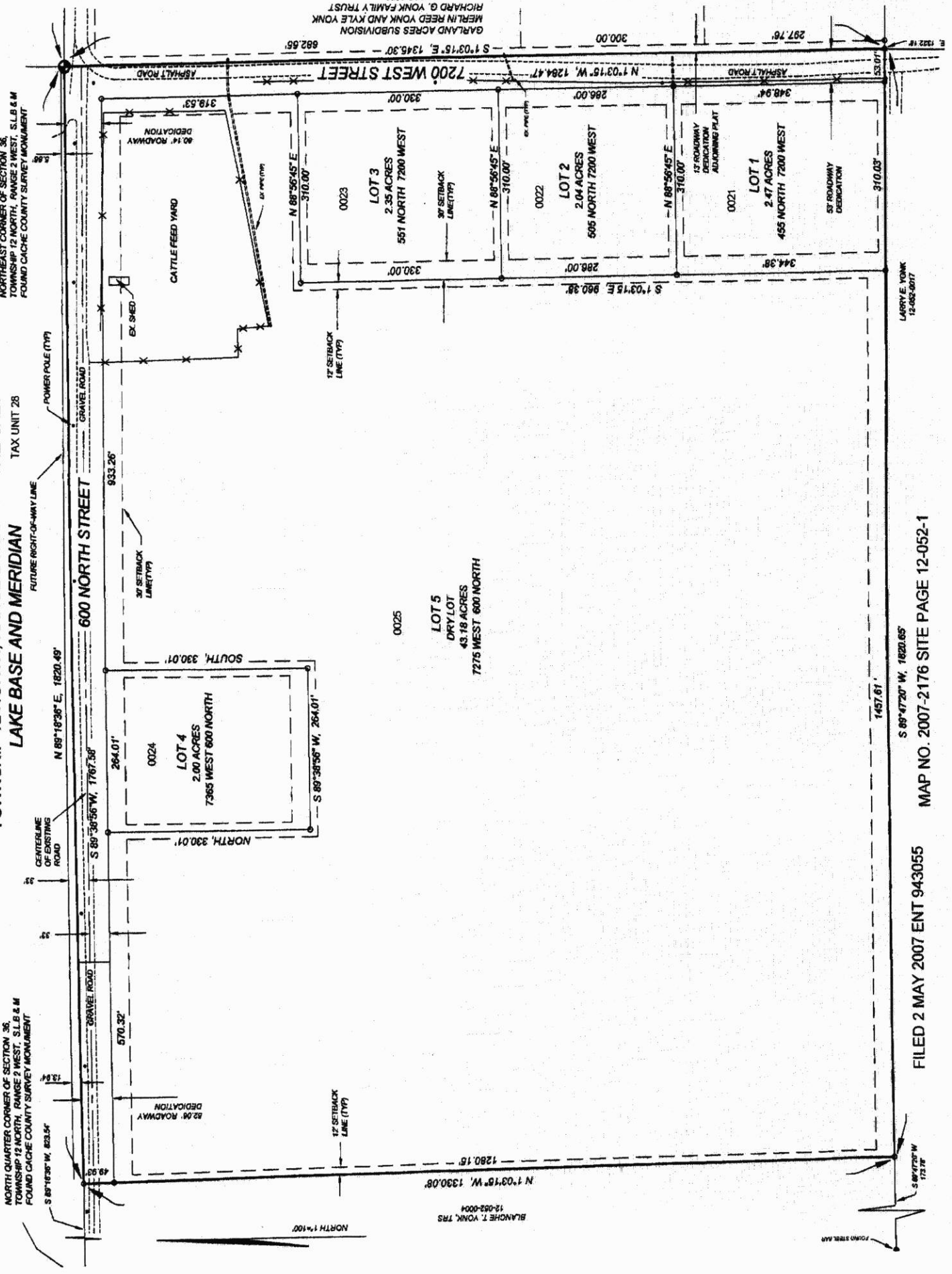
12-052

-2-

**HILL TOP FARMS SUBDIVISION**  
**PART OF THE NORTHEAST QUARTER OF SECTION 36,**  
**TOWNSHIP 12 NORTH, RANGE 2 WEST OF THE SALT**  
**LAKE BASE AND MERIDIAN TAX UNIT 28**

NORTH QUARTER CORNER OF SECTION 36,  
 TOWNSHIP 12 NORTH, RANGE 2 WEST, S.L.B. & M.  
 FOUND CACHE COUNTY SURVEY MONUMENT

NORTHEAST CORNER OF SECTION 36,  
 TOWNSHIP 12 NORTH, RANGE 2 WEST, S.L.B. & M.  
 FOUND CACHE COUNTY SURVEY MONUMENT



S 87°18'30" W, 823.54'  
 S 89°18'38" E, 1820.49'  
 S 80°38'56" W, 1767.58'  
 S 89°38'56" W, 264.01'

GENERALLINE OF EXISTING ROAD

FUTURE RIGHT-OF-WAY LINE  
 POWER POLE (TYP)  
 GRAVEL ROAD

80.14' ROADWAY DEDICATION  
 EX. SHED  
 318.63'

ASPHALT ROAD  
 297.76'  
 1322.18'

49.95'

570.32'

933.26'

310.00'

300.00'

1280.15'

1280.08'

960.38'

344.38'

348.94'

N 1°03'18" W, 1330.08'

S 89°47'20" W, 1620.65'

1457.61'

310.03'

310.00'

N 88°56'45" E, 310.00'

S 89°38'56" W, 264.01'

330.01'

330.00'

330.00'

N 88°56'45" E, 310.00'

S 89°38'56" W, 264.01'

330.01'

330.00'

330.00'

N 88°56'45" E, 310.00'

S 89°38'56" W, 264.01'

330.01'

330.00'

330.00'

N 88°56'45" E, 310.00'

S 89°38'56" W, 264.01'

330.01'

330.00'

330.00'

N 88°56'45" E, 310.00'

S 89°38'56" W, 264.01'

330.01'

330.00'

330.00'

N 88°56'45" E, 310.00'

S 89°38'56" W, 264.01'

330.01'

330.00'

330.00'

N 88°56'45" E, 310.00'

S 89°38'56" W, 264.01'

330.01'

330.00'

330.00'

N 88°56'45" E, 310.00'

S 89°38'56" W, 264.01'

330.01'

330.00'

330.00'

N 88°56'45" E, 310.00'

S 89°38'56" W, 264.01'

330.01'

330.00'

330.00'

N 88°56'45" E, 310.00'

S 89°38'56" W, 264.01'

330.01'

330.00'

330.00'

N 88°56'45" E, 310.00'

S 89°38'56" W, 264.01'

330.01'

330.00'

330.00'

N 88°56'45" E, 310.00'

S 89°38'56" W, 264.01'

330.01'

330.00'

330.00'

N 88°56'45" E, 310.00'

S 89°38'56" W, 264.01'

330.01'

330.00'

330.00'

N 88°56'45" E, 310.00'

S 89°38'56" W, 264.01'

330.01'

330.00'

330.00'

N 88°56'45" E, 310.00'

S 89°38'56" W, 264.01'

330.01'

330.00'

330.00'

N 88°56'45" E, 310.00'

S 89°38'56" W, 264.01'

330.01'

330.00'

330.00'

N 88°56'45" E, 310.00'

S 89°38'56" W, 264.01'

330.01'

330.00'

330.00'

N 88°56'45" E, 310.00'

S 89°38'56" W, 264.01'

330.01'

330.00'

330.00'

N 88°56'45" E, 310.00'

S 89°38'56" W, 264.01'

330.01'

330.00'

330.00'

N 88°56'45" E, 310.00'

S 89°38'56" W, 264.01'

330.01'

330.00'

330.00'

N 88°56'45" E, 310.00'

S 89°38'56" W, 264.01'

330.01'

330.00'

330.00'

N 88°56'45" E, 310.00'

S 89°38'56" W, 264.01'

330.01'

330.00'

330.00'

N 88°56'45" E, 310.00'

S 89°38'56" W, 264.01'

330.01'

330.00'

330.00'

N 88°56'45" E, 310.00'

S 89°38'56" W, 264.01'

330.01'

330.00'

330.00'

N 88°56'45" E, 310.00'

S 89°38'56" W, 264.01'

330.01'

330.00'

330.00'

N 88°56'45" E, 310.00'

S 89°38'56" W, 264.01'

330.01'

330.00'

330.00'

N 88°56'45" E, 310.00'

S 89°38'56" W, 264.01'

330.01'

330.00'

330.00'

N 88°56'45" E, 310.00'

S 89°38'56" W, 264.01'

330.01'

330.00'

330.00'

N 88°56'45" E, 310.00'

S 89°38'56" W, 264.01'

330.01'

330.00'

330.00'

N 88°56'45" E, 310.00'

S 89°38'56" W, 264.01'

330.01'

330.00'

330.00'

N 88°56'45" E, 310.00'

S 89°38'56" W, 264.01'

330.01'

330.00'

330.00'

N 88°56'45" E, 310.00'

S 89°38'56" W, 264.01'

330.01'

330.00'

330.00'

N 88°56'45" E, 310.00'

S 89°38'56" W, 264.01'

330.01'

330.00'

330.00'

N 88°56'45" E, 310.00'

S 89°38'56" W, 264.01'

330.01'

330.00'

330.00'

N 88°56'45" E, 310.00'

S 89°38'56" W, 264.01'

330.01'

330.00'

330.00'

N 88°56'45" E, 310.00'

S 89°38'56" W, 264.01'

330.01'

330.00'

330.00'

N 88°56'45" E, 310.00'

S 89°38'56" W, 264.01'

330.01'

330.00'

330.00'

N 88°56'45" E, 310.00'

S 89°38'56" W, 264.01'

330.01'

330.00'

330.00'

N 88°56'45" E, 310.00'

S 89°38'56" W, 264.01'

330.01'

330.00'

330.00'

N 88°56'45" E, 310.00'

S 89°38'56" W, 264.01'

330.01'

330.00'

330.00'

N 88°56'45" E, 310.00'

S 89°38'56" W, 264.01'

330.01'

330.00'

330.00'

LARRY E. YONK  
 12-052-0017

BLANCHE T. YONK, TRS  
 12-052-0004  
 N 1°03'18" W, 1330.08'

GARLAND ACRES SUBDIVISION  
 MERLIN REED YONK AND KYLE YONK  
 RICHARD G. YONK FAMILY TRUST  
 12-035-0002  
 S 1°03'15" E, 1346.30'  
 682.55'