

**RIVERVIEW ESTATES MINOR SUBDIVISION, PHASE 2**  
 Part of the SW1/4 of Section 19, T13N, R1W,  
 Salt Lake Baseline & Meridian  
 Cache County, Utah

NORTH



SCALE 1" = 100'-0"  
 0 100 200ft.

TERRY & SUZANNE GRIFFIN  
 13-029-0002

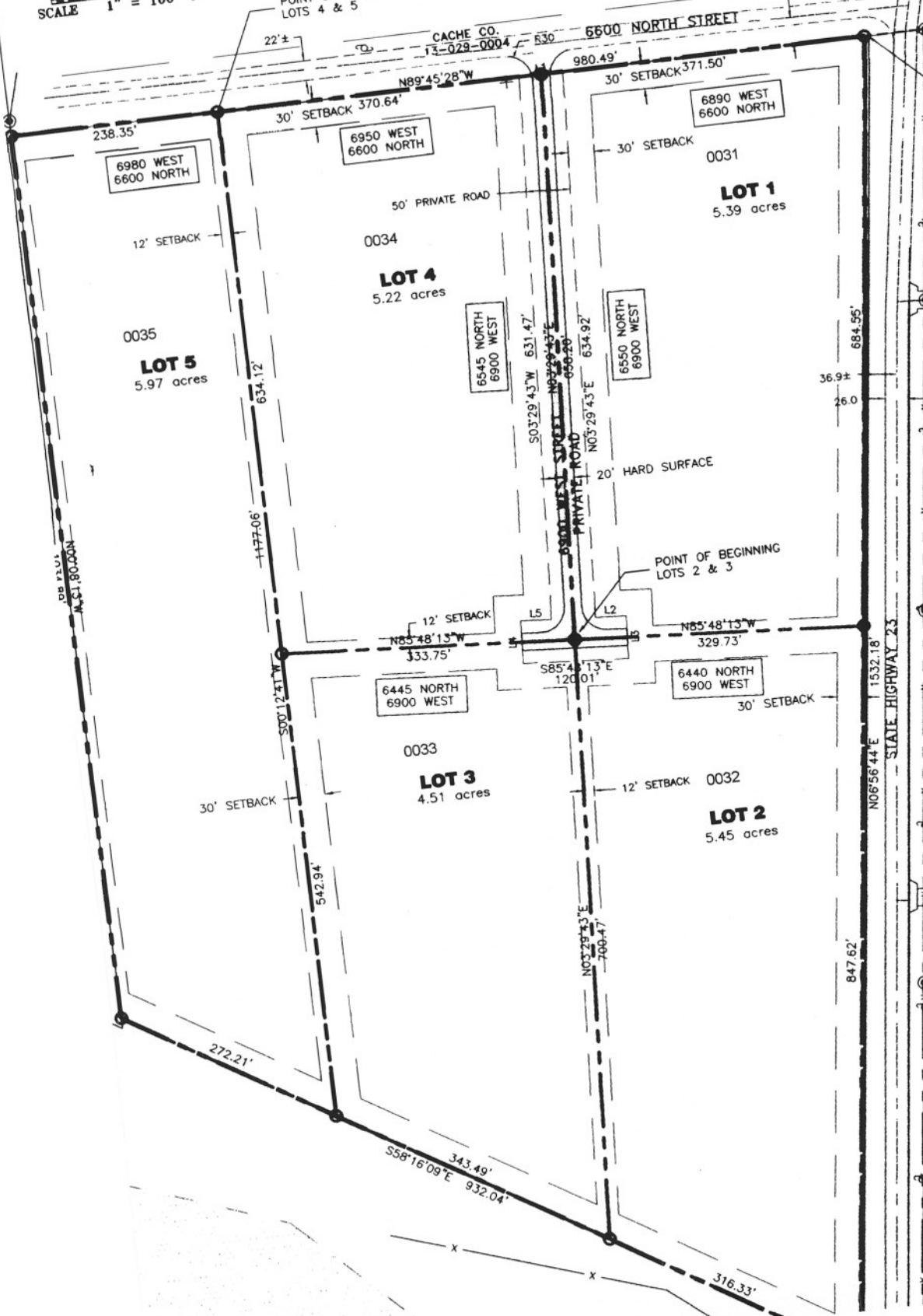
RANDALL K. RIGBY ETUX  
 13-029-0005  
 BK 953/PG 470

N4 CORN  
 CACHE  
 ALUMINI

POINT OF BEGINNING  
 LOTS 4 & 5

31'-40'  
 CL TO PROP

POINT OF BEGINNING  
 SUBDIVISION AND LOT 1



FILED 12 MAR 2007  
 ENT 938672  
 MAP NO. 2007-2162  
 SITE PAGE 13-031-1

RIVERVIEW ESTATES MINOR  
 SUBDIVISION AMENDED PLAT

LINE TABLE		
LINE	LENGTH	BEARING
L1	50.08	S89°45'28"E
L2	35.00	S85°48'13"E
L3	50.00	S03°29'43"W
L4	50.00	N03°29'43"E
L5	35.00	S85°48'13"E

DITCH